

IRONKEY BASIC S250 & D250



BUILT TO BE THE WORLD'S MOST SECURE FLASH DRIVES

Designed specifically for enterprise, government and military customers that need high performance and reliability in their USB flash storage devices, IronKey Basic S250 and D250 flash drives meet the stringent Security Level 3 requirements of the FIPS 140-2 standard. IronKey Basic S250 and D250 drives meet the extreme performance and security requirements of some of the world's most demanding organizations and are built from the ground up to be the world's most secure flash drives. They're equipped with strong hardware encryption and use the algorithm approved by the DOD for storing Top Secret data. A ruggedized, waterproof metal chassis helps protect S250 and D250 drives from the elements, and active anti-malware prevents USB threats from spreading. IronKey Basic S250 and D250 drives are equipped with a control panel localized into eight languages around the world.

FASTER PERFORMANCE, LONGER LIFE

We build IronKey Basic S250 drives with premium quality dual-channel flash memory resulting in blistering file read performance of up to 31MB/second. Premium quality dual-channel SLC flash memory also means longer life: IronKey Basic S250 drives last up to 5 times longer than drives with traditional memory. The IronKey Basic D250 also features dual-channel memory and reads files at up to 29MB/second.

EASIER TO USE, EVERYWHERE

When users insert an IronKey Basic S250 or D250 drive into a laptop or desktop computer, a redesigned control panel automatically appears to guide them through password authentication and data access. The new control panel is easier to use than earlier versions. On Windows and Mac platforms, it's now available in English, German, French, Spanish, Japanese, Korean, Simplified Chinese and Traditional Chinese. And that translates into fewer calls to your Help Desk.

SAFER, HARDWARE-BASED ENCRYPTION

Flash storage drives that rely on software to enable encryption keys are vulnerable to cold-boot and malware attacks because they export AES encryption keys to the host PC. IronKey drives instead use the IronKey Cryptochip, a proven hardware-based solution that keeps key management on the IronKey drive and off the host PC. After users plug in an IronKey Basic S250 or D250 drive, they must first authenticate with a password. Only then does IronKey's Cryptochip enable the encryption keys that unlock data and applications.

TWO VERSIONS, MAXIMUM FLEXIBILITY

Two flavors of secure flash drives allow you to make the right choice to meet your mobile security needs.

IronKey Basic S250 Series.

High-performance and extra long-lasting S250 drives are built to stand up to continuous use on the road. Dual-channel SLC flash memory delivers exceptional performance and longevity.

IronKey Basic D250 Series.

D250 drives balance performance and value for users who don't require constant access to data. Same great security as the S250, with dual-channel MLC flash memory for reliable read/write performance.

BENEFITS

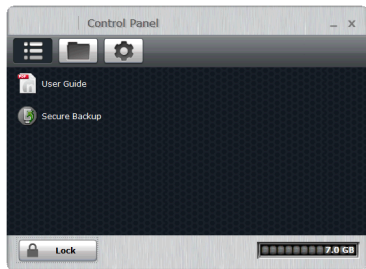
- Easy to use control panel interface that is localized into eight languages
- Store virtual desktops to enable users to work anywhere
- Gain faster file read/write performance
- Enforce encryption policies
- Device reset or self-destruction available if password is forgotten
- Minimize risks associated with lost or stolen drives
- Streamline policy compliance
- Access data on Windows, Mac or Linux
- Easy to deploy and simple to use
- No Windows administrative privileges required
- No software or drivers to install



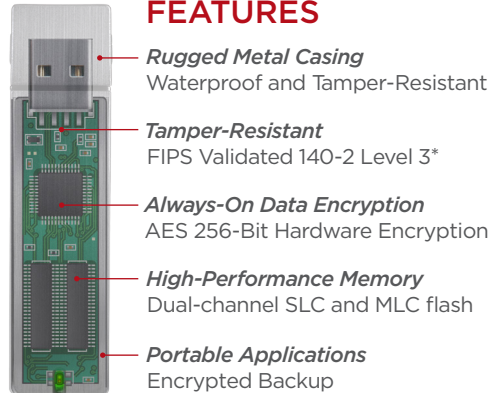
USB 2.0

IRONKEY BASIC S250 & D250

CONTROL PANEL



FEATURES



DESIGNED TO FOIL MALWARE AND THIEVES

IronKey's hardware-based encryption and password verification can't be disabled by malware or a careless user. Self-defending IronKey drives also provide active protections against the spread of worms, crimeware and other malicious code. And if a thief enters 10 incorrect passwords in an attempt to break into the drive, the Cryptochip will securely erase all encrypted data.

EASY TO MANAGE, ENDPOINT AWARE

IronKey Basic S250 and D250 work seamlessly with a range of leading endpoint security software products. Every device has a unique serial number, making it easy to manage and apply usage policies—even restricting ports to only a whitelisted set of drives.

PROTECTION THAT NEVER SLEEPS

Unlike software-based encryption, IronKey's AES 256-bit hardware encryption is always on and can't be disabled. And with the IronKey Cryptochip handling encryption, PC performance doesn't suffer.

BUILT TO LAST

Shielded in a solid, tamper-resistant and waterproof metal casing, IronKey drives are built to survive years of wear and tear.

TECHNICAL SPECS

CAPACITIES

S250: 2GB, 4GB, 8GB, 16GB and 32GB
D250: 2GB, 4GB, 8GB, 16GB, 32GB and 64GB

SPEED

S250: Up to 31MB/sec read; Up to 24MB/sec write
D250: Up to 29MB/sec read; Up to 13MB/sec write

MEMORY

S250: Dual-channel SLC Flash
D250: Dual-channel MLC Flash

DIMENSIONS 75mm X 19mm X 9mm

WEIGHT .9 oz (25 grams)

WATERPROOF MIL-STD-810F

TEMPERATURE

Operating: 0°C, +70°C
Storage: -40°C, +85°C

HARDWARE USB 2.0 high speed

LANGUAGES

English, German, French, Spanish, Japanese, Korean, Simplified Chinese, Traditional Chinese

HARDWARE ENCRYPTION

Data: AES 256 CBC (Cipher-Block Chained) mode

PKI: RSA-2048 bit

Hashing: SHA-256 bit

FIPS 140-2 Level 3 NIST validated

*Cryptographic Module Certification #1734

**AES (Cert #1874), DRBG (Cert #152), HMAC (Cert #1119),
RNG (Cert #774), RSA (Cert #955), SHS (Cert #1647),
Triple-DES (Cert #965)**

SECTION 508 COMPLIANT

WARRANTY 1 year limited

	D250, S250 S1000, F-Series
Windows® 10, 8.1, 8	✓
Windows 7(SP1), Vista®(SP2)	✓
Mac OS X v. 10.9.x-10.11.x	✓
Linux v. 2.6+	✓